



SCARLETT Series

Category: Wood/Upholstery

Description: **Arm Chair**  
 Upholstered Seat & Back  
 Loose Back Held to Frame with Buckled Straps  
 3 Slat Beechwood Back Slats  
 Solid Beech Wood Frame-Mortise & Tenon Construction  
 Corner Blocks Glued and Screwed into Place, Nylon Nail Glides  
**Wood Finish: Any Cape Standard**

Cape's Model #: **3426**

| Fabric Grade:                          | SPRADLING/<br>PANAZ Fabric C | SPRADLING/<br>PANAZ Fabric D | COM/<br>Grd 1 | COL/<br>Grd 2 | Grd 3 | Grd 4 | Grd 5 | Grd 6 | Grd 7 | Grd 8 | Real<br>Leather |
|--|------------------------------|------------------------------|---------------|---------------|-------|-------|-------|-------|-------|-------|-----------------|
| Fabric Requirement (meters):           |                              |                              | 0.95          |               |       |       |       |       |       |       |                 |
| Fabric Requirement (yards):            |                              |                              | 1.04          | 18 SqFt       |       |       |       |       |       |       |                 |
| Fabric Requirement SEAT ONLY (meters): |                              |                              | 0.53          |               |       |       |       |       |       |       |                 |
| Fabric Requirement SEAT ONLY (yards):  |                              |                              | 0.58          | 10 SqFt       |       |       |       |       |       |       |                 |
| Fabric Requirement BACK ONLY (meters): |                              |                              | 0.58          |               |       |       |       |       |       |       |                 |
| Fabric Requirement BACK ONLY (yards):  |                              |                              | 0.63          | 11 sqft       |       |       |       |       |       |       |                 |

|       |                |                |                |                |                |                |                |                |                |                |                |
|-------|----------------|----------------|----------------|----------------|----------------|----------------|----------------|----------------|----------------|----------------|----------------|
| LIST: | <b>1267.00</b> | <b>1298.00</b> | <b>1313.00</b> | <b>1380.00</b> | <b>1446.00</b> | <b>1513.00</b> | <b>1580.00</b> | <b>1646.00</b> | <b>1713.00</b> | <b>1779.00</b> | <b>1850.00</b> |
|-------|----------------|----------------|----------------|----------------|----------------|----------------|----------------|----------------|----------------|----------------|----------------|

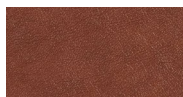
|                          |       |                                |                                    |
|--------------------------|-------|--------------------------------|------------------------------------|
| Overall Width(cm):       | 59.00 | Stacking:                      | No                                 |
| Seat Width(cm):          | 50.00 | Pcs/Carton:                    | 1                                  |
| Seat Height(cm):         | 47.00 | Weight/Carton(KG):             | 12                                 |
| Overall Height (cm):     | 81.00 | Weight/Carton(Lbs.):           | 26.46                              |
| Arm Height(cm):          | 66.00 | Chair Weight/Carton(KG):       | 9.2                                |
| Overall Depth(cm):       | 61.00 | Chair Weight/Carton(Lbs.):     | 20.28                              |
| Seat Depth(cm):          | 47.00 | Volume(CBM):                   | 0.31                               |
| Overall Width(inches):   | 23.23 | Volume(CUFT):                  | 10.95                              |
| Seat Width(inches):      | 19.69 | Dual Fabrics Upcharge:         | <b>5% Upcharge to Prices Above</b> |
| Seat Height(inches):     | 18.50 | ALL Striped/Patterned Fabrics: | <b>5% Upcharge to Prices Above</b> |
| Overall Height (inches): | 31.89 | Indoor:                        | Yes                                |
| Arm Height(inches):      | 25.98 | Outdoor:                       | No                                 |
| Overall Depth (inches):  | 24.02 |                                |                                    |
| Seat Depth(inches):      | 18.50 |                                |                                    |

|                    |               |
|--------------------|---------------|
| Warranty:          | 3 Years       |
| Lead Time:         | 10 weeks      |
| Country Of Origin: | Europe        |
| Finishing:         | Europe/Canada |
| Upholstery:        | Europe/Canada |
| Shell Wood Finish: | Europe/Canada |
| Frame Finish:      | Europe/Canada |
| Tariff:            | No            |

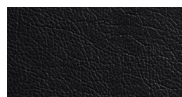
BACK STRAP OPTION:



Brown REAL Leather



Black REAL Leather



NOTE: Straps Can Be Done in Matching Fabric

BUCKLE OPTION:

F3-Antique Brass



F9-Black